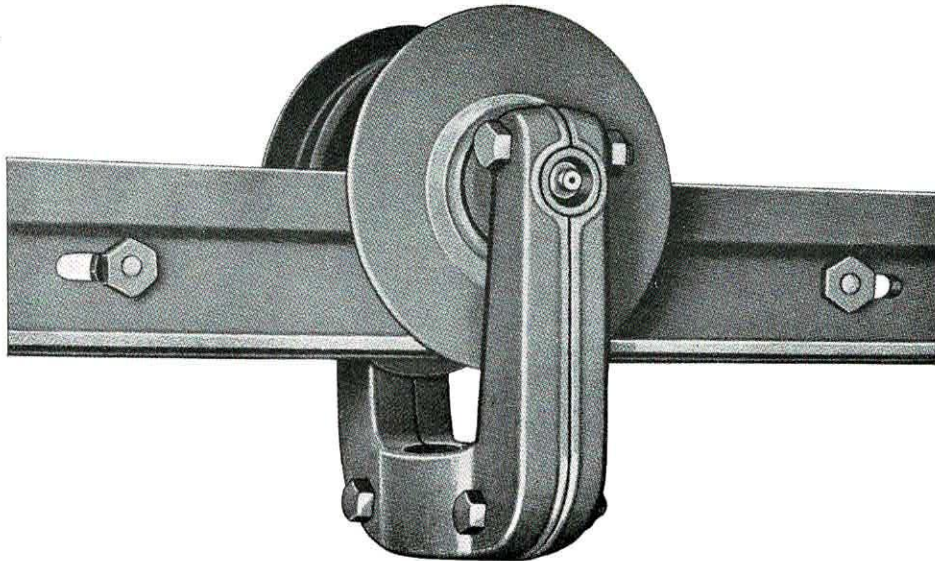


Two-Wheel Trolley capacity 1000 pounds



Trolley No. 179 was developed for use under conditions where load distribution requires concentration of 1000 pounds on two wheels.

This extra duty has been built into these trolleys by the use of a more powerful yoke and wheel assembly together with heavier axles.

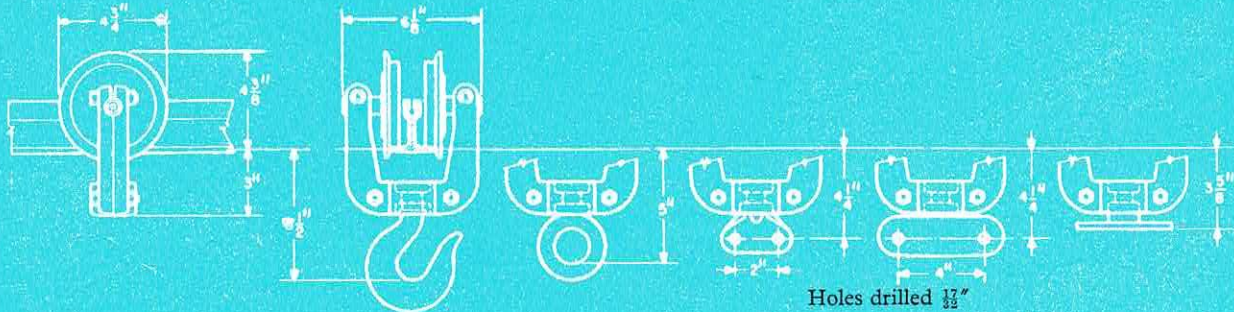
Specifications

The two-wheel trolley shown above is rated well within its capacity with an ample factor of reserve strength.

This trolley is priced without load supporting member, but can be furnished, on request, with any one of the fittings—load hook, eye, clevis or other swivels as illustrated below—at the additional cost of the fitting. Drawings give also all dimensions and clearances.

Wheels : No. 164 drop forged, hardened tread.
Wheel Yokes : No. 145 drop forged.
Wheel Bearings : Heavy duty single row precision ball.
Axles : Machined steel.

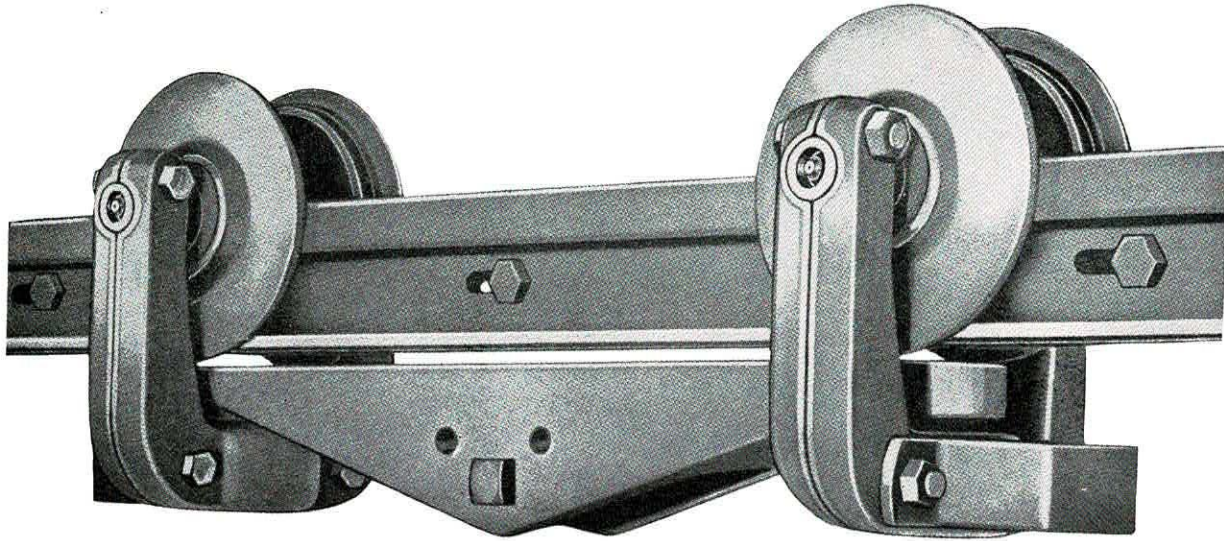
Lubrication : Through axles with Tecaemit fitting.
Finish : Focal Orange.
Weight : 11¼ pounds.
Holes drilled $\frac{17}{32}$ "



Dimensions given on this page are for estimating purposes only. Certified blueprints will be furnished for working drawings.

No. 180

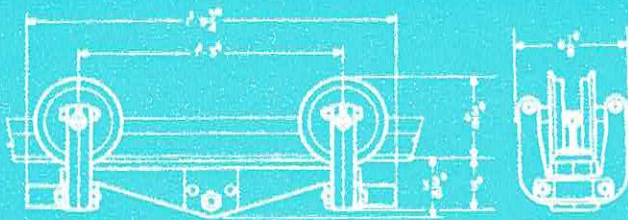
Four-Wheel Trolley capacity 2000 pounds



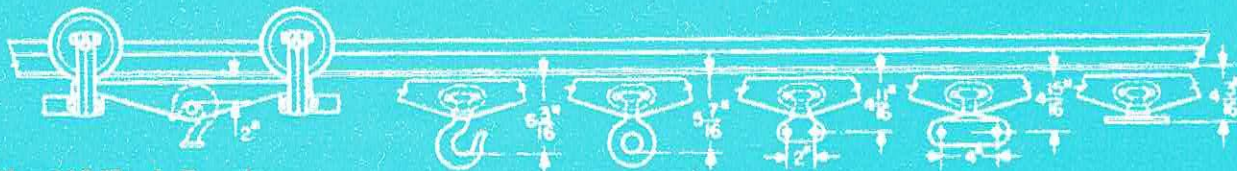
Four-wheel trolley No. 180 is made up of two No. 179 trolleys coupled with forged steel load bar. It will handle one ton loads efficiently and continuously.

The extra heavy load bar furnished with this assembly affords minimum headroom clearance. It is fitted as standard with internal bearing for hoist hook, but will be equipped with any one of the load carrying members shown in the illustration below without additional charge.

Specifications



Wheels : No. 164 drop forged, hardened tread.
Wheel Yokes : No. 145 drop forged.
Wheel Bearings : Heavy duty single row precision ball.
Axles : Machined steel.
Lubrication : Through axle with Tecaemit fitting.
Load Bar : No. 212 drop forged. Usually supplied with No. 118 hoist hook bearing.
Will be furnished, if so ordered, with load hook, eye, clevis, or swivel as shown below, without additional charge.
Finish : Focal Orange.
Weight : 34 pounds.



No. 118 Hook Bearing

Dimensions given on this page are for estimating purposes only. Certified blueprints will be furnished for working drawings.

Holes drilled $\frac{1}{2}$ "

Above fittings seated in No. 213 Female Swivel Bushing.

Special Close Coupled Trolleys

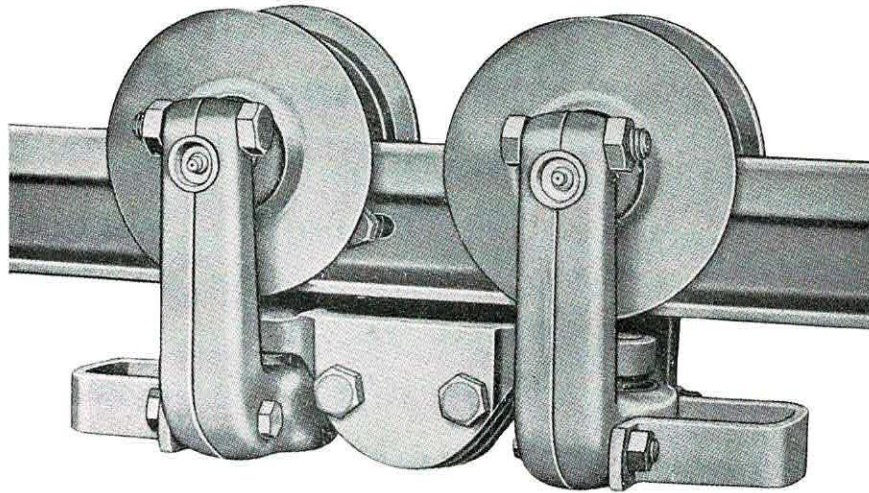
Four-Wheel Trolleys

No. 147—1000 lb. Capacity
No. 146—1500 lb. Capacity
No. 142—2000 lb. Capacity

Eight-Wheel Trolleys

Use on Truss or Girder Rail only.

No. 126—3000 lb. Capacity
No. 127—4000 lb. Capacity
No. 257—4000 lb. Capacity



This special trolley permits concentration of loads over four or eight wheels which are as closely coupled as possible, and allow full swivel around the shortest of curves.

Certain types of electric hoists are easily adapted to MonoRail track with a close coupled trolley mounted on each end to bring the hook up as high as possible for maximum clearance.

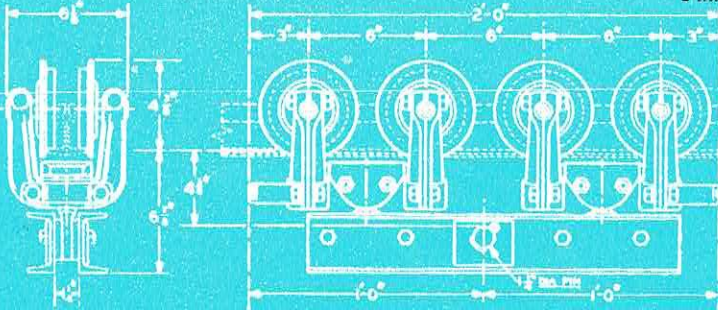
The eight-wheel type affords maximum concentration of heavy loads to allow normal hoist operation to within one foot from the end of track or crane bridge.

All the advantages of standard trolleys as described in the foregoing pages apply to the close coupled units listed above.

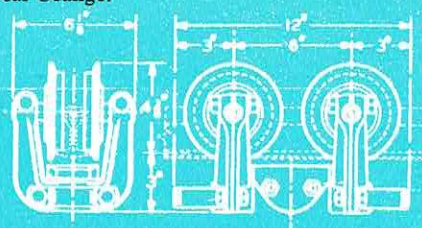
Specifications

Wheels : No. 191 used on trolley No. 147. No. 164 on all other trolleys. All wheels drop forged with hardened treads.
Wheel Yokes : No. 102 used on trolleys No. 147, No. 146 and No. 126. All others take yoke No. 145.
Wheel Bearing : Precision Ball.
Axles : Machined steel.

Lubrication : Through axle with Tecalemit fitting.
Load Bars : No. 114 alloy steel casting fitted with No. 213 swivel bushing. Thrust bearing load bar No. 240 furnished with No. 257 Trolley.
Load Bars : On eight-wheel trolleys—fabricated from steel channels with nickel steel load hook bearing pin.
Finish : Focal Orange.



Dimensions cover trolley No. 126 only.
Write for certified blueprints covering others.



Dimensions cover trolleys No. 146 and 147 only.
Write for certified blueprints covering others.

Dimensions given on this page are for estimating purposes only.
Certified blueprints will be furnished for working drawings.