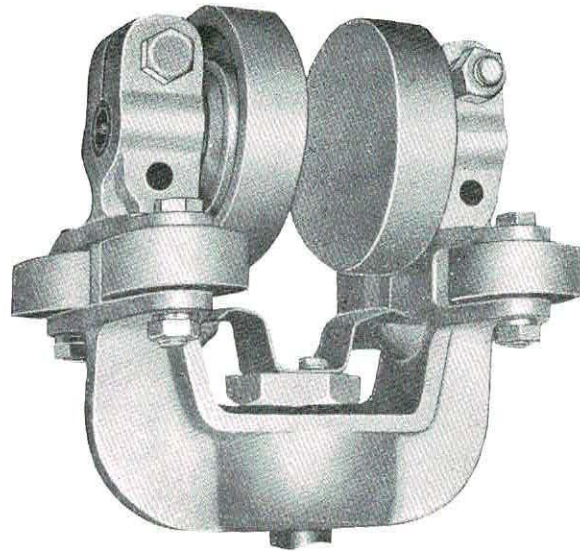


# RailMaster Two-Wheel Trolley

capacity 3500 pounds

This heavy duty trolley is equipped with No. RA1-2 Flangeless Wheels as well as No. RA1-16 Side Rollers so that wheel friction on the track flanges is reduced to a minimum. The side rollers keep the trolley in perfect alignment for high speed travel.

All the above features help to eliminate any possibility of wear on track flanges either on straight or curve sections. This trolley is standard equipment on all RailMaster MonoTractor or Cab Operated Carriers. Load bearing fittings shown below are furnished at extra cost.



## Specifications

*Wheels:* No. RA1-2 Drop Forging, Hardened Treads.

*Wheel Bearings:* Double row, precision ball.

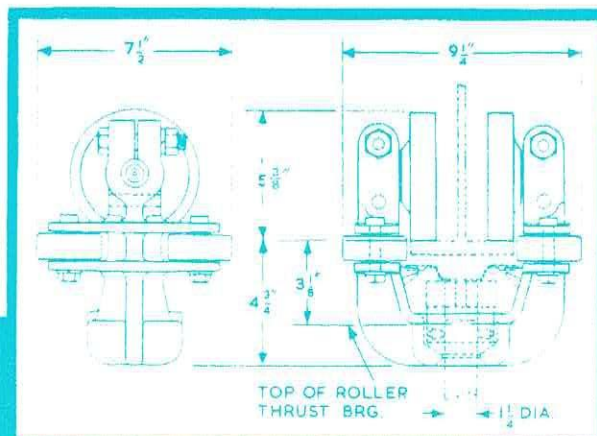
*Side Rollers:* RA1-16 single row, ball bearing.

*Yoke:* No. RA1-1 Heavy Malleable Iron.

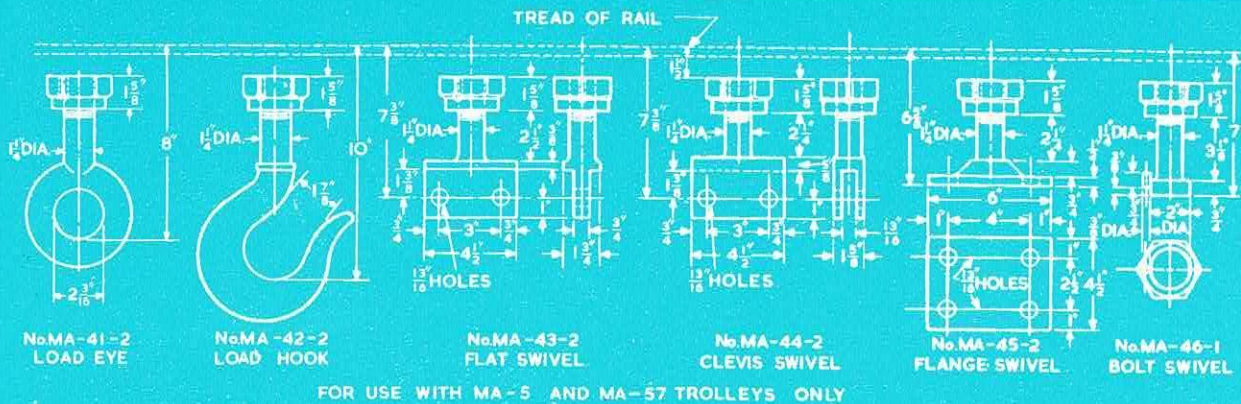
*Swivel Bearings:* Roller thrust with suppressor.

*Axle:* Machined Steel  $1\frac{1}{8}$ " diameter.

*Lubrication:* Through axle with Tecalemit fittings.



*Dimensions given on this page are for estimating purposes only. Certified blueprints will be furnished for working drawings.*

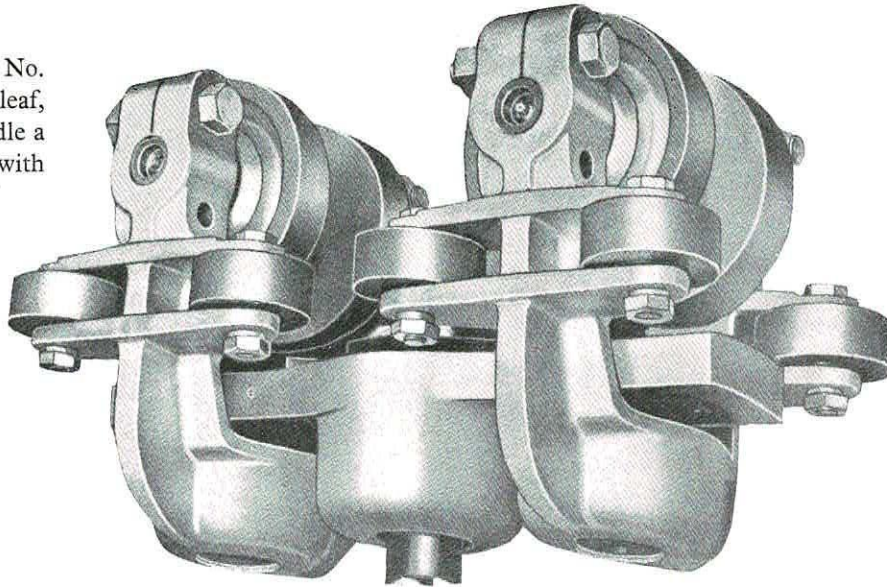


## RailMaster Four-Wheel Trolley

capacity 7000 pounds

With all the advantages of the No. RA1 Trolley described overleaf, this four wheel trolley can handle a 3-ton load on RailMaster track with minimum effort.

Suspension equipment shown below other than load hook or eye can be supplied at an additional price.



### Specifications

*Wheels:* No. RA1-2 Drop Forged Hardened Treads.

*Wheel Bearings:* Double row precision ball.

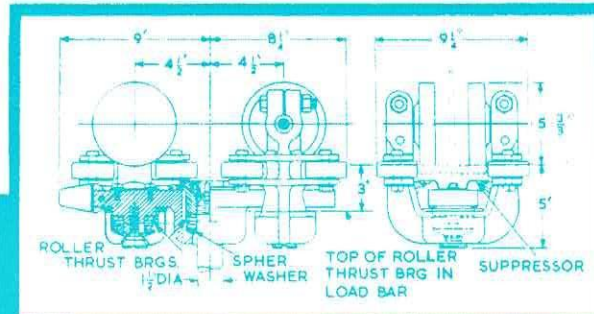
*Side Rollers:* No. RA1-16 Single Row Ball Bearing.

*Lubrication:* Through axle with Tecaletmit fitting.

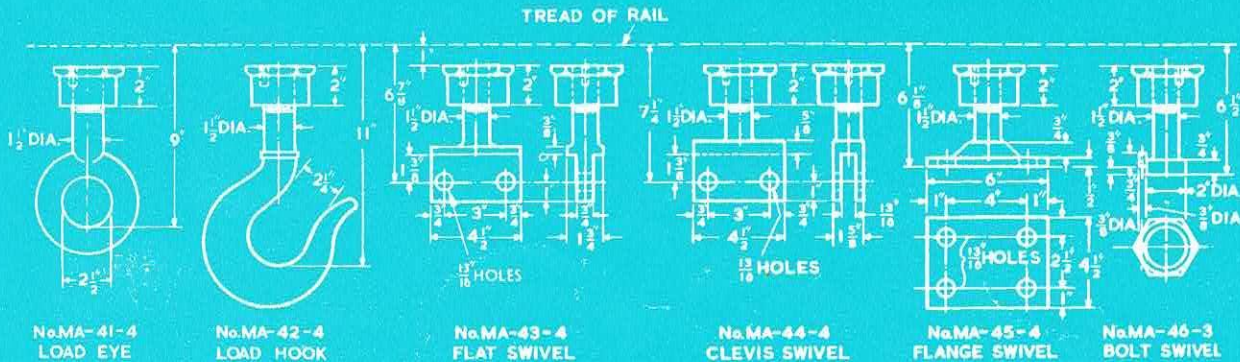
*Yoke:* No. RA1-1 Heavy Malleable Casting.

*Load Bar:* No. RA2-1 Special Alloy Steel with Roller Thrust Bearing.

*Load Fitting:* No. MA-41-4 Eye or No. MA-42-4 Hook fitted with Trolley.



*Dimensions given on this page are for estimating purposes only. Certified blueprints will be furnished for working drawings.*

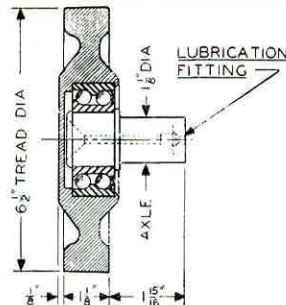


FOR USE WITH FOUR WHEEL TROLLEYS MA-12 AND MA-59 ONLY

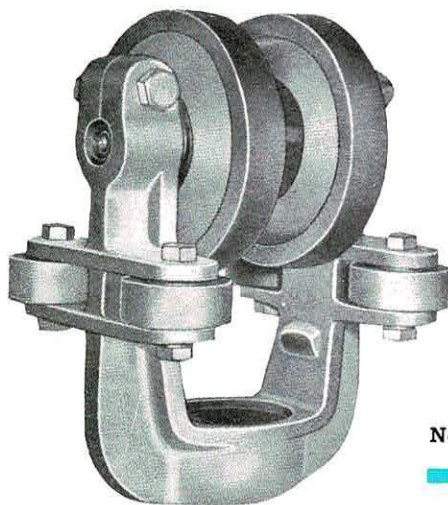
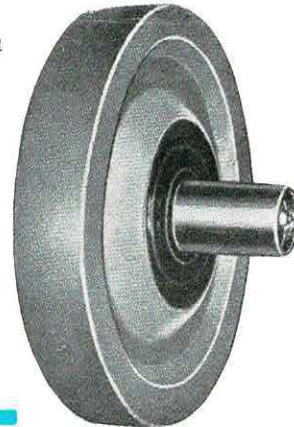
## **RailMaster Crane Trolleys** for MonoTractor Cranes

### **No. RE-1-5 Crane Wheel**

This wheel is a heavy drop forging of special steel, accurately machined to take the double row, precision ball bearings. The flangeless tread is machined and hardened to insure accurate bearing of the wheel on the track flange. Lubrication is by pressure system through the axle.



**No. RE-1-5 Wheel**  
Capacity 2500 Pounds



### **No. RE-1 RailMaster Crane Trolley**

Heavy malleable yokes are accurately machined to receive the axles of two RailMaster Crane Wheels as described above. The saddles of these yokes are carefully machined to receive a roller thrust bearing with spherical seat which acts as a self-aligning bearing. This prevents binding and thereby promotes free movement of bridge along runways.

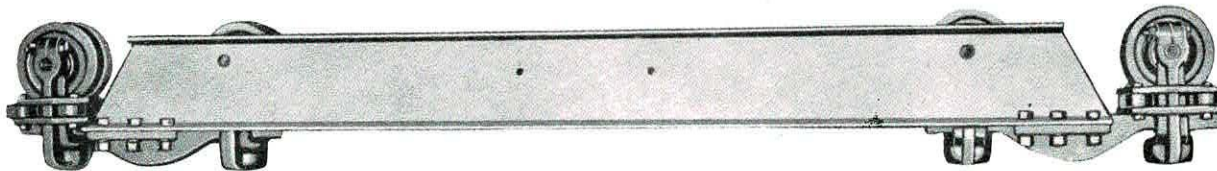
The flangeless wheels and side rollers to maintain accurate alignment of the trolley with the crane runway track.

Thus equipped, this trolley assures smooth travel of RailMaster Cranes particularly those of long span and MonoTractor power operation.

**No. RE-1 Trolley** Capacity 5000 Pounds

### **RailMaster Crane Truck**

The crane truck shown below is used on all 5-ton RailMaster MonoTractor Cranes. Trucks with RE-1 two wheel trolleys are fitted with 3-ton cranes. The side rollers with anti-friction bearings hold the truck in positive rail alignment.



**End Truck for Five-Ton Standard  
RailMaster MonoTractor Crane**