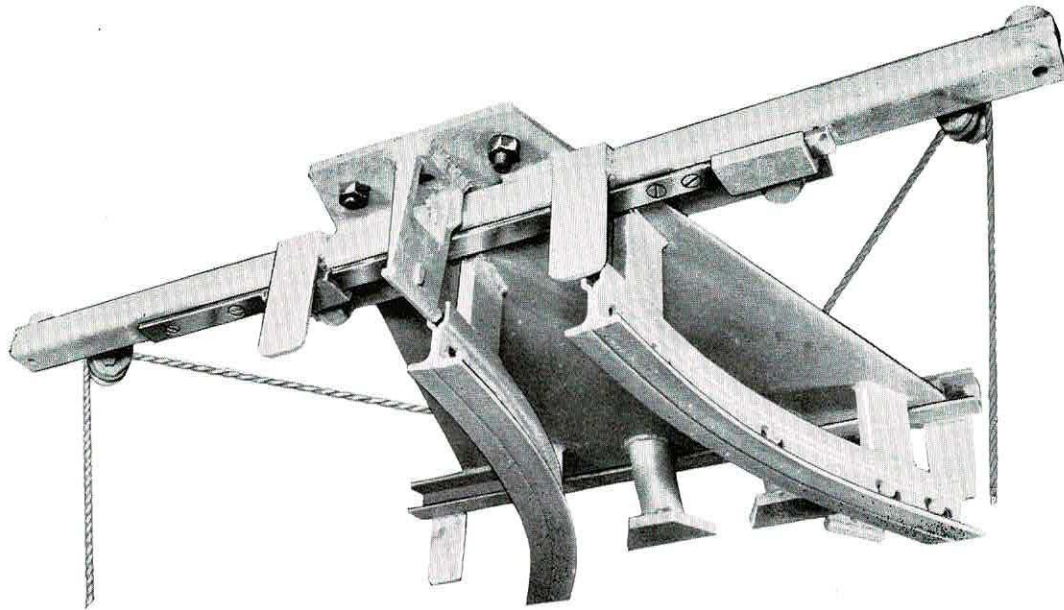


Glide Type Y Switch



The Y Switch furnishes connection with diverging lines on either side of the centre line of the switch.

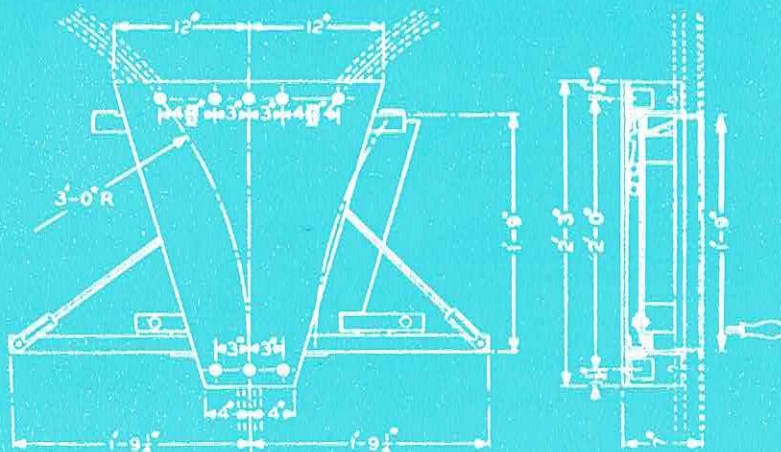
It embodies all the advantages of the Glide Type Switch—ease of manipulation, smooth curves for trolley travel, perfect register of shift section with connecting tracks, and provision against crowding by outside track.

Positive latching in both operating positions, and safety stops always guarding all open track are safety features.

Give distance from floor to rail for correct switch rope length.

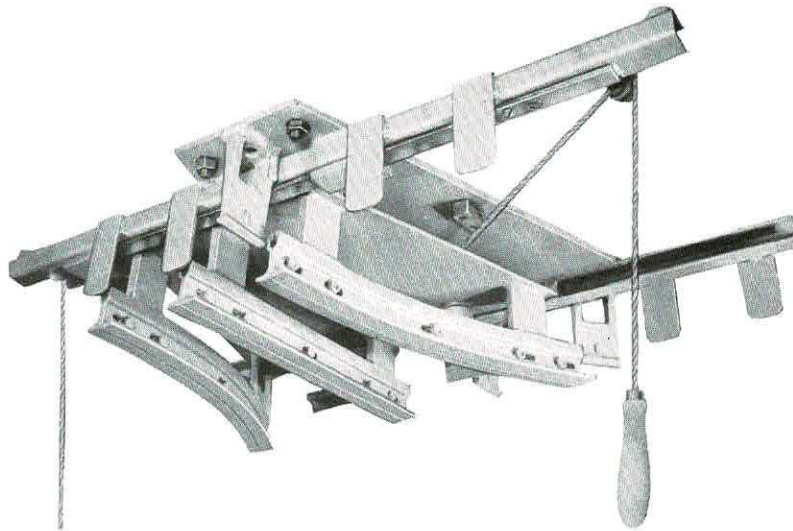
Specifications

- Track Supports* : Drop forgings.
- All nuts secured with lock washers.
- Accurate register between shift section and connecting track.
- Positive Latch.
- Safety stops guard all open rails.
- Switch Ropes* : Heavy sash cord.
- Rope Pulleys* : Malleable iron.
- Pulley Supports* : Heavy angle iron.
- Finish* : Focal Green.
- Weight* : 140 pounds.



Dimensions given on this page are for estimating purposes only. Certified blueprints will be furnished for working drawings.

Three Way Glide Type Switch



The jig-welded assembly of glide switch parts assures level joints at track junctions. Each switch is thoroughly inspected for track register before shipment.

Approaching tracks are prevented from crowding the glide section by lugs in the drop forged track supports.

A positive latch holds switch in any position until released by a pull on switch rope. This is especially important in shifting to the intermediate position

since the switch latches at this point requiring another pull on the rope to shift to other positions.

All open tracks are protected by safety stops. Trolleys cannot leave track at switches.

MonoRail switches of the Glide Type add greatly to the adaptability and flexibility of MonoRail Systems where close spacing of branch tracks is desirable.

Give distance from floor to rail for proper switch rope length.

Specifications

Track Supports : Drop forgings. All nuts secured with lock washers. Accurate register between shift section and connecting track.

Positive latch.

Safety stops guard all open rails.

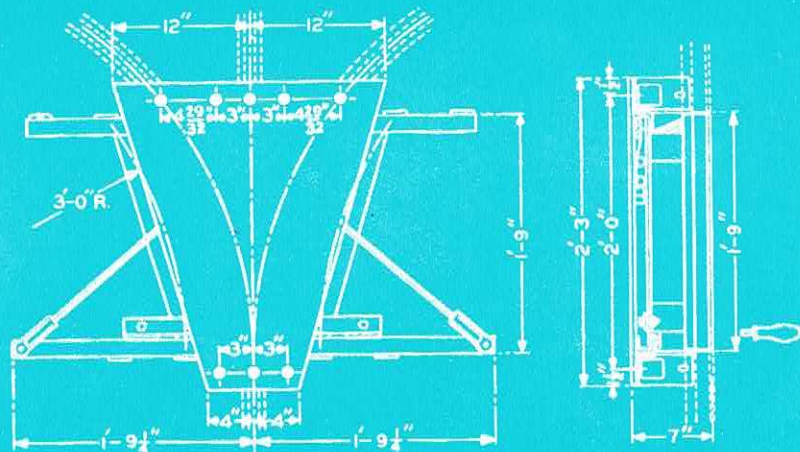
Switch Ropes : Heavy sash cord.

Rope Pulleys : Malleable iron.

Pulley Supports : Heavy angle iron.

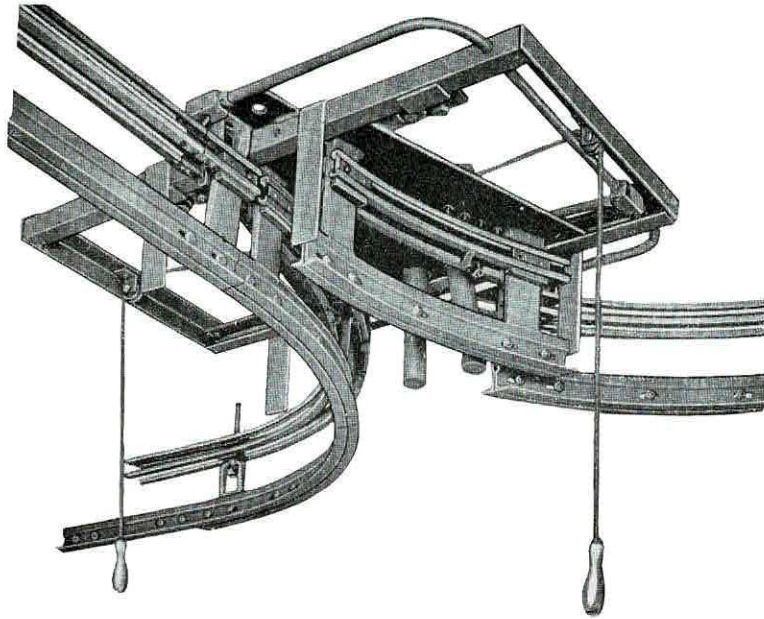
Finish : Focal Green.

Weight : 158 pounds.



Dimensions given on this page are for estimating purposes only. Certified blueprints will be furnished for working drawings.

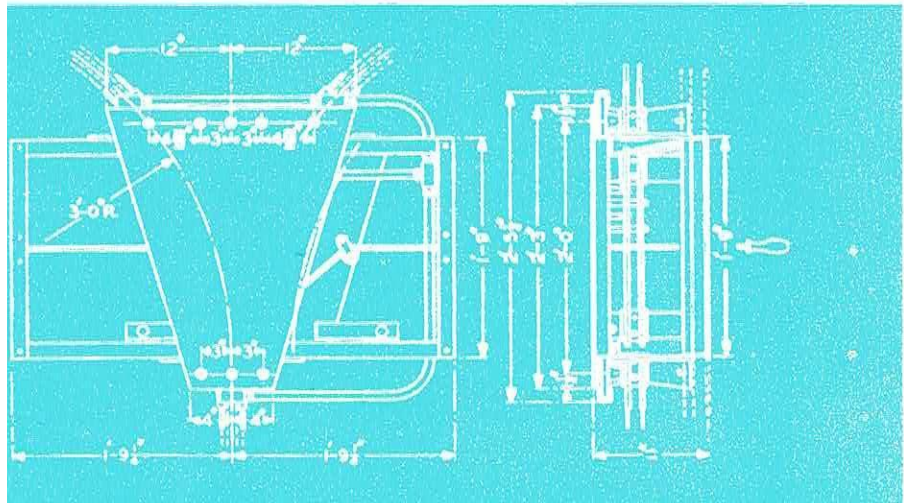
Electrified Glide Type Y Switch



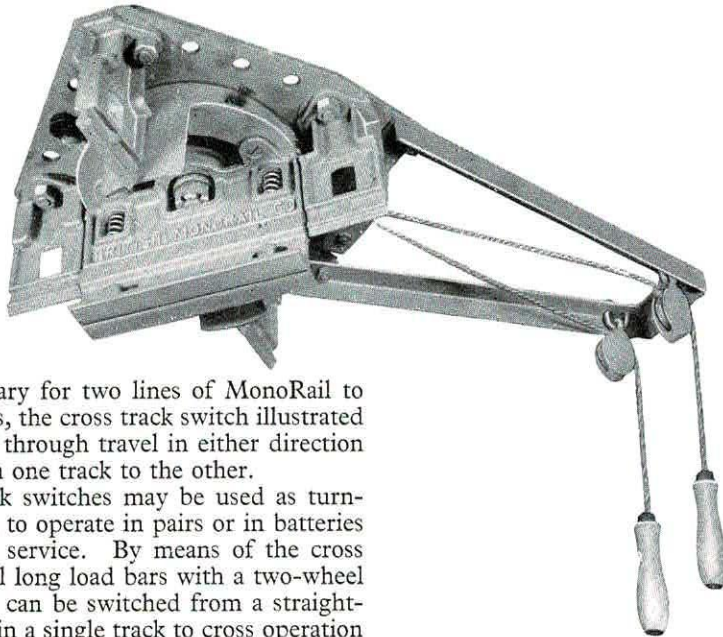
Where space is limited and track arrangement calls for connection to the right and to the left this Y switch will meet such requirements under closer headroom and with half the switch throw obtained in other equipment.

The close grouping of rigid conductors together with the compact design of the switch itself makes these space-saving features possible.

Current is carried around the switch through standard conduit and fittings which follow around the frame to the radiating tracks. Shift sections are energized by a special commutator so that service can be obtained when trolleys are passing through the switch. All of the standard safety features apply to this switch.



Cross Track Switch



Where it is necessary for two lines of MonoRail to cross at right angles, the cross track switch illustrated above provides for through travel in either direction or for shifting from one track to the other.

These cross track switches may be used as turntables and grouped to operate in pairs or in batteries of four for special service. By means of the cross track switch special long load bars with a two-wheel trolley at each end can be switched from a straight-away line of travel in a single track to cross operation on parallel tracks.

Loaded two-wheel trolleys can be run onto the cross track switches or turntables and the latter operated without changing the position of the load. The shifting or revolving section of the cross track switch is carried on roller thrust bearings and operates easily even under load. Latching with either track is positive and secure.

Trolleys cannot possibly leave the track on a cross track switch as open rail ends are automatically guarded. Smooth operation over cross track switches is secured by positive alignment between track and switch section.

Give distance from floor to rail for proper switch rope length.

Specifications

Beam accommodates two-wheel trolleys only.

Operating Parts : Malleable iron.

Parts mounted on heavy malleable plate.

Swing beam carried on roller thrust bearings.

All nuts secured with lock washers.

Heavy circular guard protects open tracks.

Approaching tracks locked to prevent crowding.

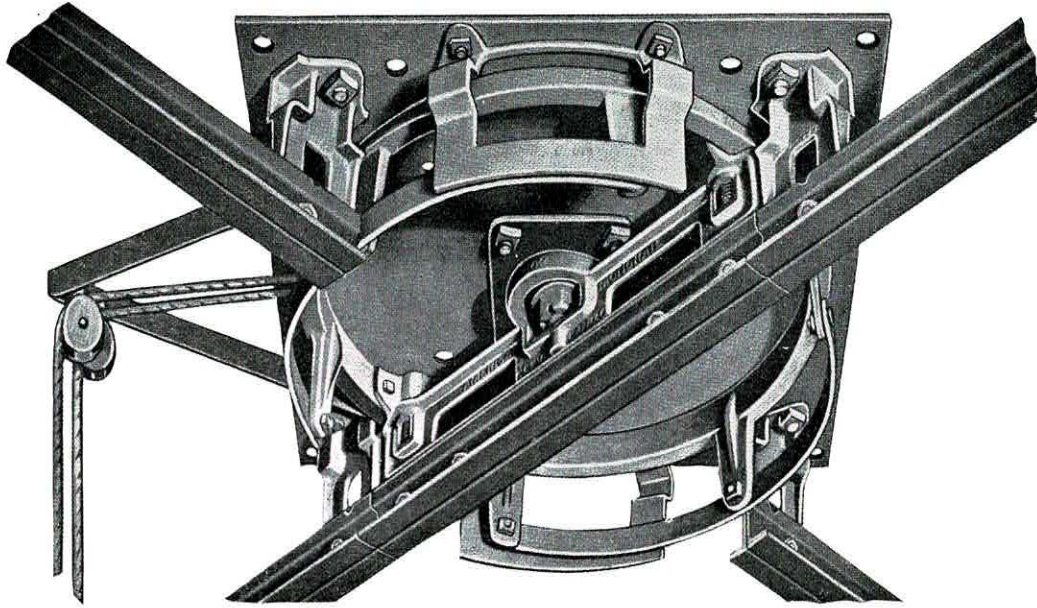
Pull Rope : Heavy sash cord.

Finish : Focal Green.

Weight : 55 pounds.

Dimensions given on this page are for estimating purposes only. Certified blueprints will be furnished for working drawings.

Standard Turntable



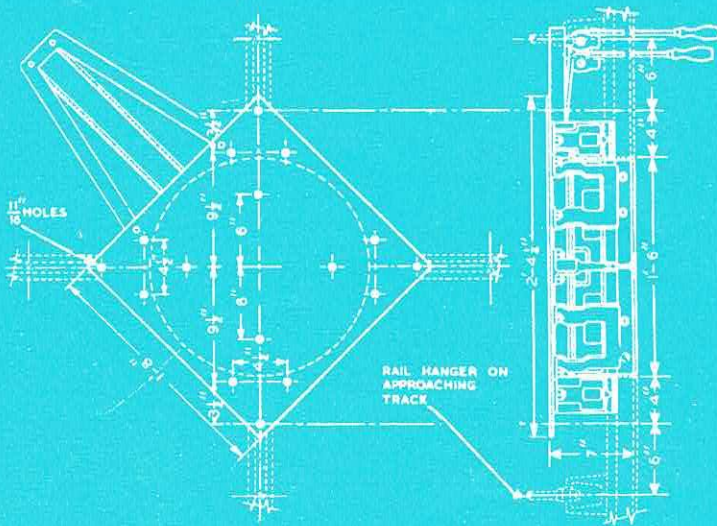
In laying out MonoRail to fit a given situation, the track itself can be formed into very short radius curves and, by incorporating switches, cross track switches and turntables in the system, it is possible to secure any desired line of travel for the trolley.

Where a direct right angle turn is desired, or where conditions are so crowded that the placing of a switch is impracticable, turntables are used to secure the

change in direction of travel.

The shifting or revolving member, supported on thrust roller bearings, operates easily and smoothly while carrying loaded trolley. If a swivel is provided between the trolley and load, the turntable can be operated without changing the position of the load.

Give distance from floor to rail for proper switch rope length.



Specifications

Beam accommodates all two-wheel trolleys and four-wheel trolleys with wheel centres 11" or less.

Operating Parts : Malleable iron.

Parts mounted on $\frac{1}{8}$ " steel plate.

Swing bar carried on roller thrust bearings.

All nuts secured with lock washers.

Pull Ropes : Heavy sash cord.

All open rail ends automatically guarded.

Approaching tracks locked to prevent crowding.

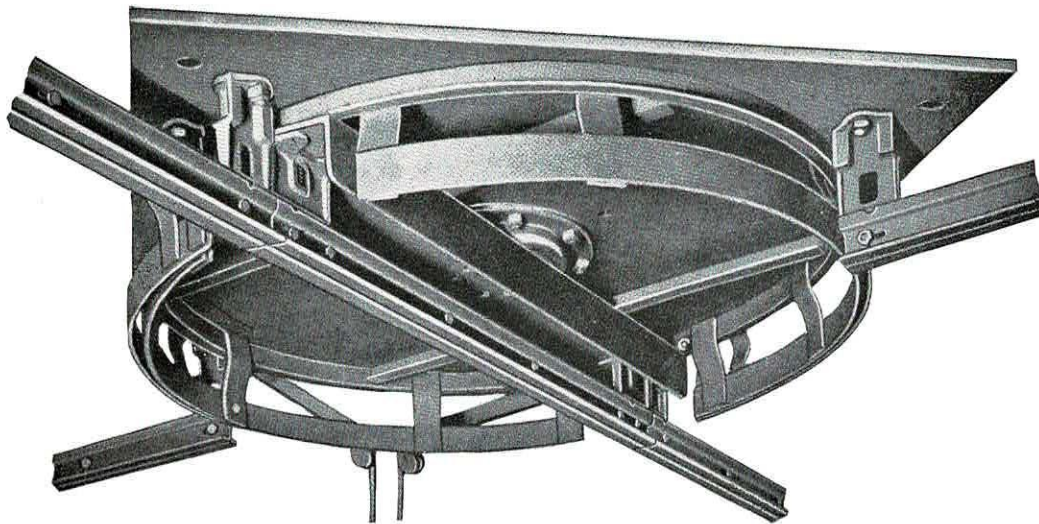
Depression in rail flange spots trolley in position.

Finish : Focal green.

Weight : 74 pounds.

Dimensions given on this page are for estimating purposes only. Certified blueprints will be furnished for working drawings.

Giant Turntable



The giant turntable is built larger and heavier than the standard turntable for longer trolley clearance and greater load carrying capacity.

The swing bar, supported on ball bearings, operates easily under capacity loads and registers in exact alignment with connecting tracks. Ends of bar are supported on a shelf at registering points, preventing deflection when loads pass through turntable.

Safety guards prevent trolleys from leaving all open track ends. Track is locked against creepage

by lugs on all supporting brackets. A depression in the flange of rail on turntable spots trolleys in position.

For loads exceeding one ton, see No. 303 Two-Ton Rotary Switch overleaf. Special turntable can be furnished for track approaching at various angles or incorporating curved sections to meet complicated switching requirements. Use of standard parts keeps initial cost of such special arrangements reasonably low.

Specifications

Beam accommodates all 4-wheel trolleys and 8-wheel trolleys Nos. 126, 127 and 171 only.

Operating Parts : Malleable iron.

Parts mounted on $\frac{1}{2}$ " steel plate, 42" x 42".

Standard Rotation 90°.

Swing bar carried on ball bearings.

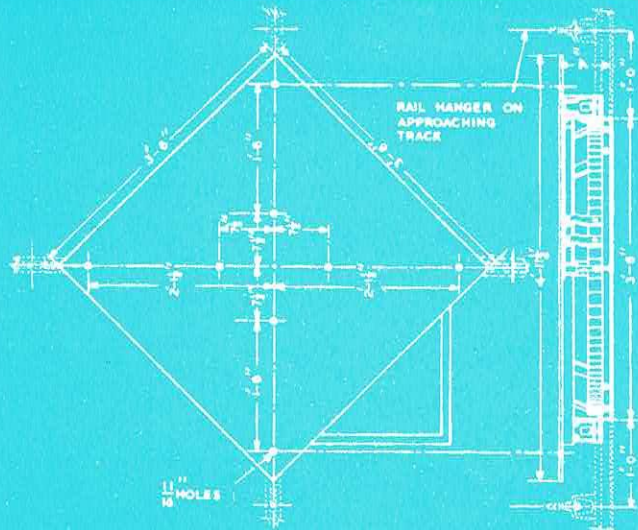
Open rail ends automatically guarded.

Approaching tracks locked to prevent crowding.

Pull Ropes : Heavy sash cord.

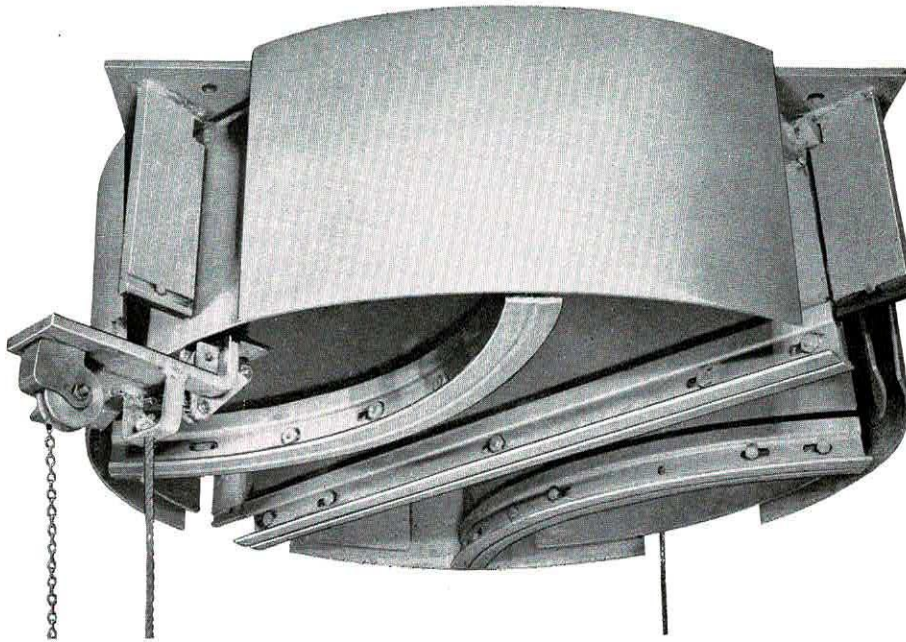
Finish : Focal green.

Weight : 425 pounds.



Dimensions given on this page are for estimating purposes only. Certified blueprints will be furnished for working drawings.

3-Way Rotary Switch

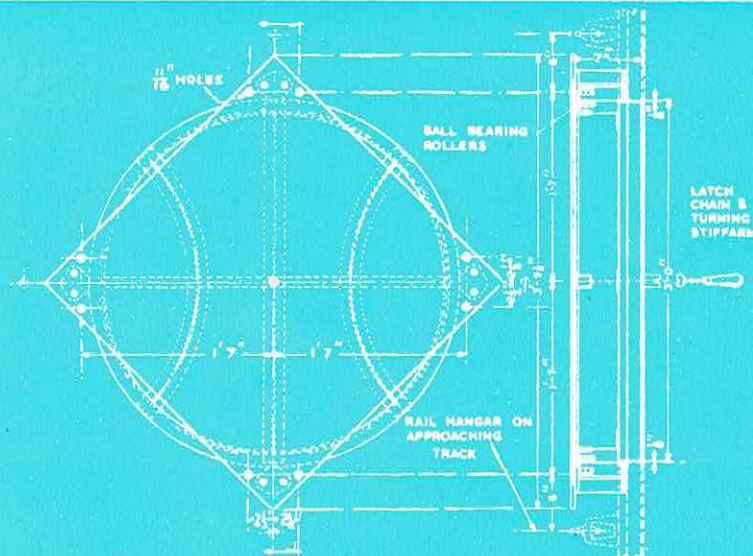


For an extremely compact tract arrangement, this rotary switch permits direct passage of trolleys to the right, left or straight ahead from any approach when tracks cross at right angles.

In the dimension drawing, note that No. 407 hangers are specified for track support. These

hangers should be placed in the approaching tracks 6" from the malleable hangers in the switch.

The switch can be modified for electrified systems but will not accommodate MonoTractor travel. It can also be used as a turntable for No. 126 and No. 127 8-wheel trolleys.



Specifications

- Mounting Plate* : $\frac{3}{8}$ " Steel.
- Rotary Section* : $\frac{5}{16}$ " Ring on ball-bearing rollers.
- Safety Guards* : $\frac{3}{16}$ " Steel.
- Track Hangers* : Malleable iron.
- Finish* : Focal green.

Dimensions given on this page are for estimating purposes only. Certified blueprints will be furnished for working drawings.