

RailMaster Glide Switches

TWO WAY SWITCH

RB-10 NON ELECTRIFIED
RIGHT HAND

RBE-10 ELECTRIFIED RIGHT HAND

RB-11 NON ELECTRIFIED
LEFT HAND

RBE-11 ELECTRIFIED LEFT HAND

THREE WAY SWITCH

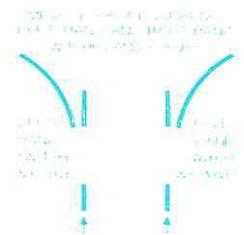
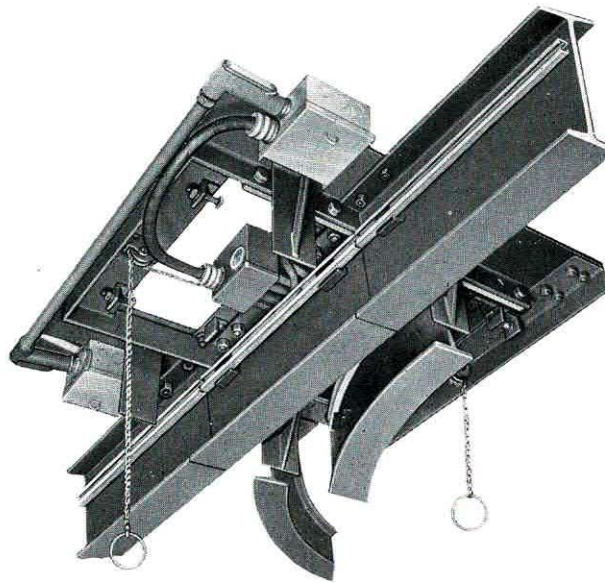
RB-13 NON ELECTRIFIED

RBE-13 ELECTRIFIED

WYE SWITCH

RB-12 NON ELECTRIFIED

RBE-12 ELECTRIFIED



Glide Switches of the RailMaster line not only permit compact spacing of branch tracks but operate so easily that only a light pull on the pendant chain is required for shift to any position. This ease of operation is due to the method of mounting the entire shift section on steel rollers.

Holes are drilled in the switch frame for attaching the approaching track. This brings the track into exact relation to the shift section of the switch for smooth passage of trolleys.

Compact electrification of RailMaster switches provides through service for electrically operated carriers.

Specifications

Mounting: Through heavy angle frame.

Bearings: Steel rollers with bronze bushings.

Latch: Positive in all positions.

Guards: Heavy baffles rigidly mounted.

Pull Chains: Heavy machine chain with $\frac{1}{4}$ " ring handles. Length as required.

Electrification: Wiring carried around switch and current wired to shift section with flexible heavy duty cable. Conductor bars locked against creepage. No field wiring necessary for erection.

Finish: Focal Green.

Dimensions given on this page are for estimating purposes only. Certified blueprints will be furnished for working drawings.

