

## RailMaster Track

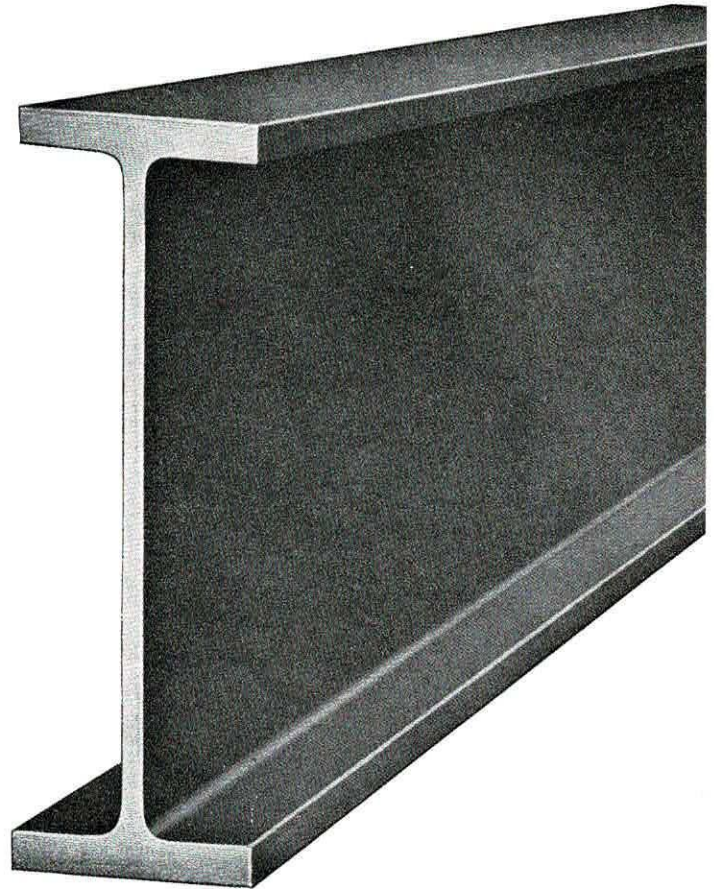
RailMaster Track is a special rail section of high carbon-manganese steel rolled to our specifications.

The manganese content provides a dense, uniform, fine-textured steel of great tensile strength. This alloy is not only especially suited to carrying rolling wheel loads but it is also more than one-third stronger than ordinary steel as a load carrying member.

This section offers all the advantages of rigidity for carrying loads over long spans with economical hanger spacing. At the same time it provides a flat tread for accurate bearing of trolley wheels, assuring easy movement of carriers.

The combination of carbon and manganese in this steel provides a hard, uniform rail which will not peen down under the action of trolley wheels. The heavy flanges of this hard steel will not wear nor roll down in service.

### Specifications



*Nominal Tensile Strength:* 100,000 P.S.I.

*Nominal Elastic Limit:* 60,000 P.S.I.

*Nominal Carbon:* .50.

*Nominal Manganese:* .60.

*Nominal Silicon:* .15.

*Area:* 7.34 in.<sup>2</sup>.

*Moment of Inertia:* 176.24 in.<sup>4</sup>.

*Section Modulus:* 28.43 in.<sup>3</sup>.

*Furnished in lengths up to:* 40 ft.

*Weight per foot:* 25 lbs.

*Finish:* Focal Green.

*Dimensions given on this page are for estimating purposes only  
Certified blueprints will be furnished for working drawings*

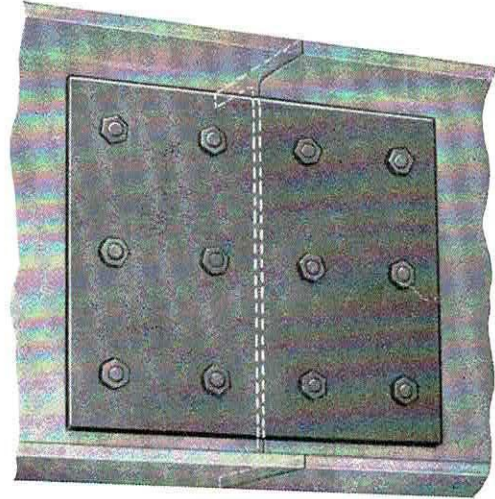
**Nos. MD-6  
MD-3**

## **RailMaster Track Splice**

### **MD-6**

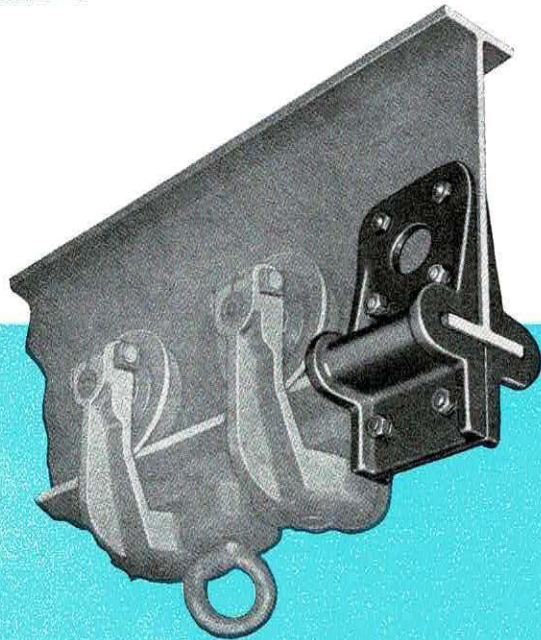
Splice plates are mounted on each side of the rail web and held by twelve special conical bolts and nuts fitted into countersunk holes. Track connections are thereby held in accurate relation. Track must be supported on both sides of splice plates for full load reaction.

Edges of flanges are ground to accurate gauge for uniformity of flanges at all splices.



## **RailMaster End Stop**

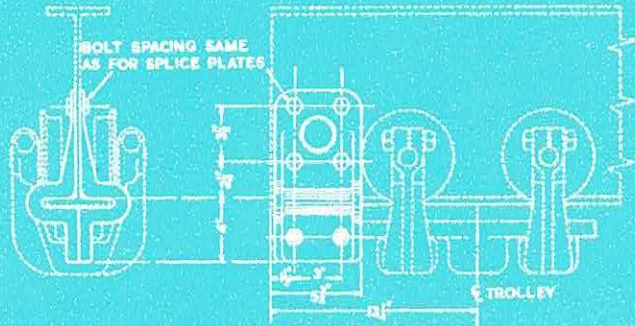
### **MD-3**



**No. MD-3 End Stop**

*Illustrating end stop taking impact on trolley load bar.*

Two heavy malleable castings are bolted together through the splice plate holes in the rail web to form a sturdy protection at the ends of all RailMaster tracks and craneways. Trolleys are stopped by contact of load bar against end stop. End stops are furnished complete with bolts and nuts.



*Dimensions given on this page are for estimating purposes only. Certified blueprints will be furnished for working drawings.*