

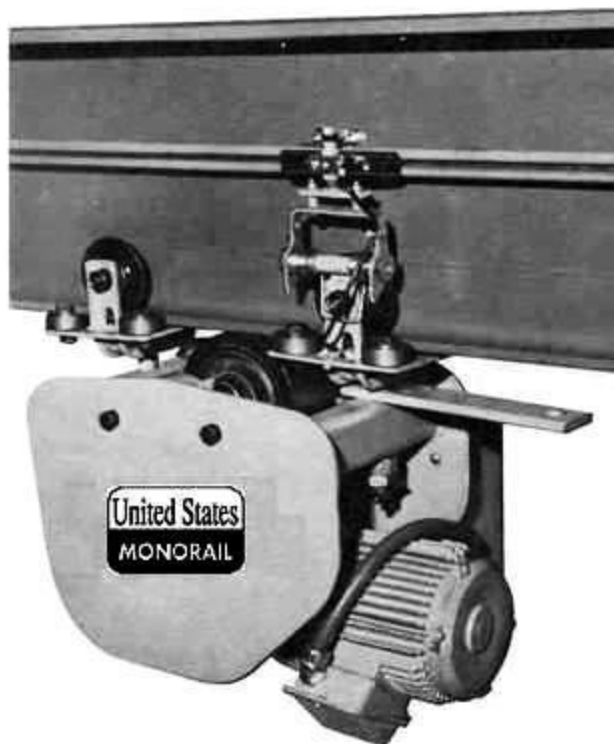
This range of tractors caters for the two-speed travel demands of heavy loads on push button controls or under automatic transfer operations.

Maximum live load capacities are :-  
V1 2,036 kg (4,480 lb),

RV101 5,080 kg (11,200 lb).

**V1**

# V2 DRIVETRACTOR



V  
2  
D  
R  
I  
V  
E  
T  
R  
A  
C  
T  
O  
R

## FEATURES

**Trolleys.** Drivetractors are furnished with swivel type trolleys, equipped with side rollers for monorail systems with curves.

**Drive Wheels.** Drivetractor is equipped with a 6 inch diameter rubber tire, spring loaded for positive traction and long wear.

**Gears.** Right angle gearing is precision cut to AGMA standards enclosed in an oil-tight gear case. Final reduction to drive wheel is through a #50 durable roller chain drive for ease of changing speeds.

**Speeds.** Standard drive tractor speed is 75 FPM single speed. Speeds of 50, 100, 120, 150 FPM and 2-speed available as optional equipment.

**Motor Brakes.** Brakes are optional equipment.

**Voltage.** 230/460, 3 phase, 60 Hz standard. For optional voltage contact factory.

**Controls.** Magnetic type reversing contactor Control voltage 115 volt.

**Paint.** Safety orange as standard.

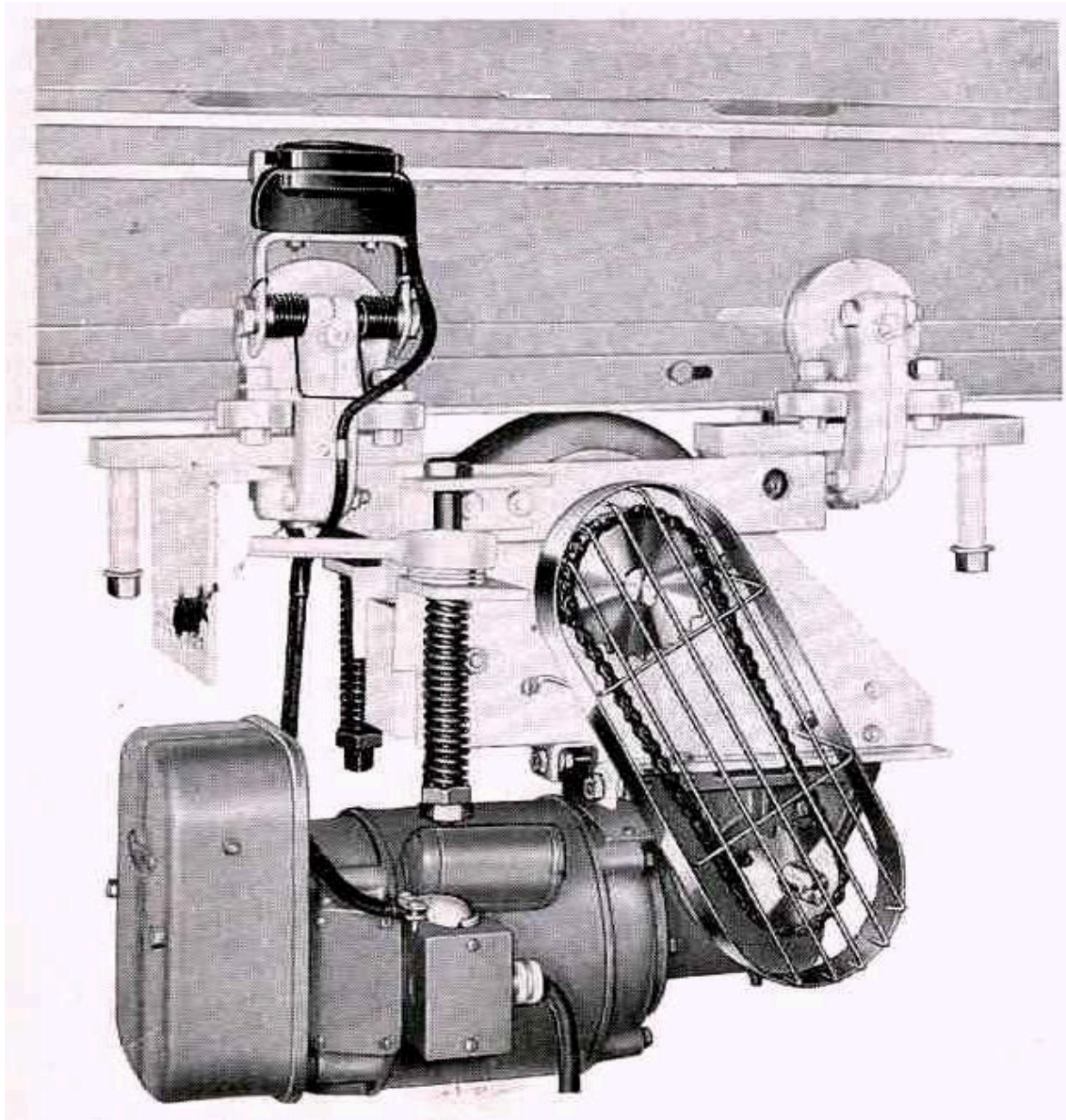
**Service.** Class "C".

**Weight.** Net weight, approx. 140 lbs.

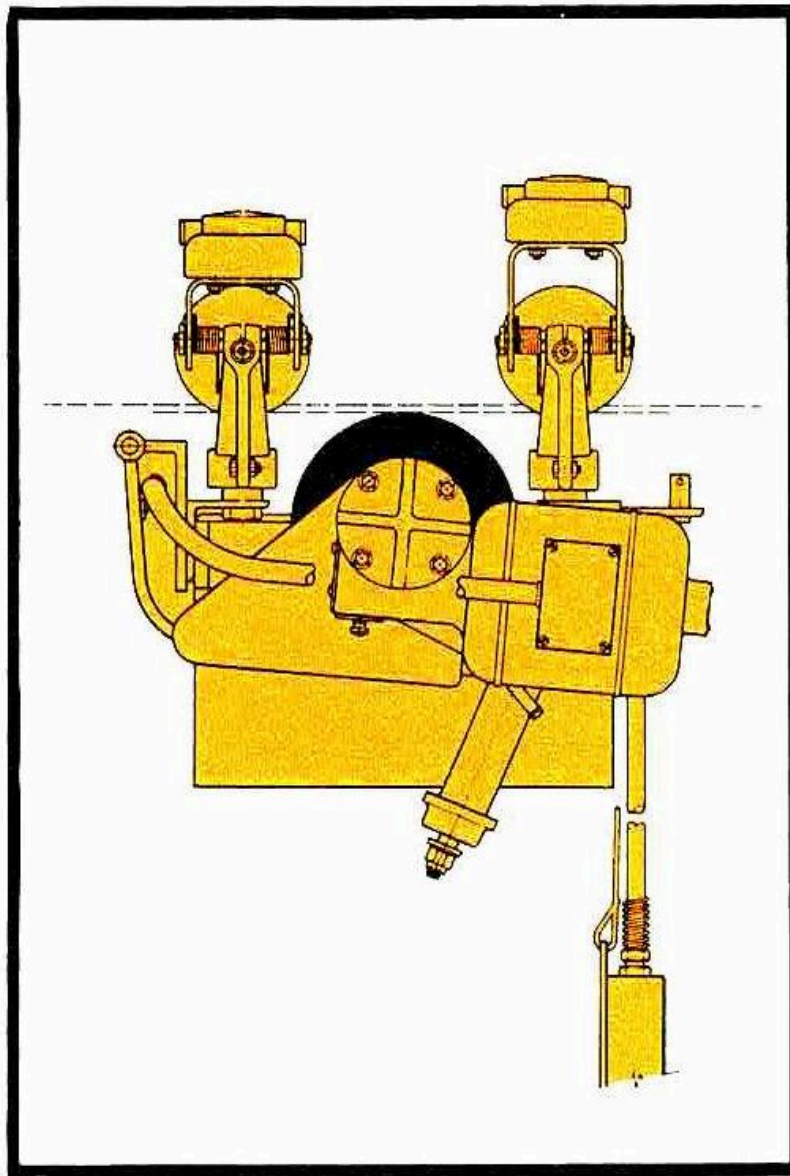
**Options.** Other options not listed are available, contact factory.



## V3 MONOTRACTOR



No. V3 MonoTractor was designed to propel light carriers continuously through automatic cycles of delivery. This compact, sturdily built unit offers many advantages for similar operation. It is trouble-free, easily maintained and accurately controlled. With standard push-button control it will easily handle loads up to two tons on horizontal track.



This is a general purpose tractor range with a maximum live load capacity of 2,036 kg (4,480 lb).

It is designed specifically to power travel loads with perfect control at all times.

# V4



1234 Washington Street, Boston, MA 02118  
Telephone: 617/482-8383 Fax: 617/482-8384  
TOLL-FREE: 800/321-3236  
EMAIL: sales@ac-h.com - WEB SITE: www.ac-h.com

## US-V5 MONOTRACTOR

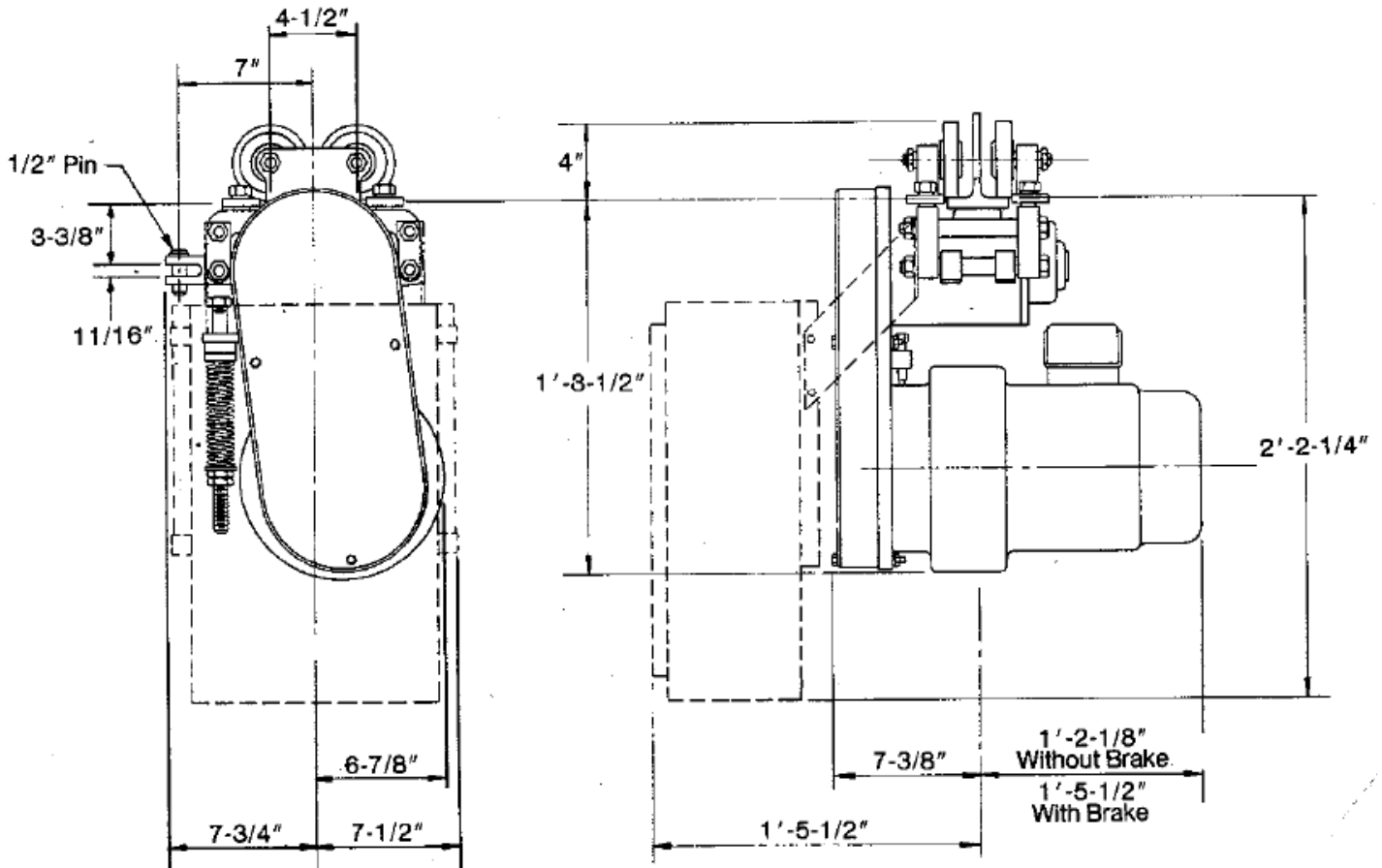
US-V5 tractor drives are powered by NEMA mounted motors driving through double reduction helical gear reducers and a roller chain final reduction to 6 in. diameter polyurethane drive wheels. Traction is obtained by the drive wheel bearing against the bottom of the track. Pressure is applied by a compression spring and is adjustable.

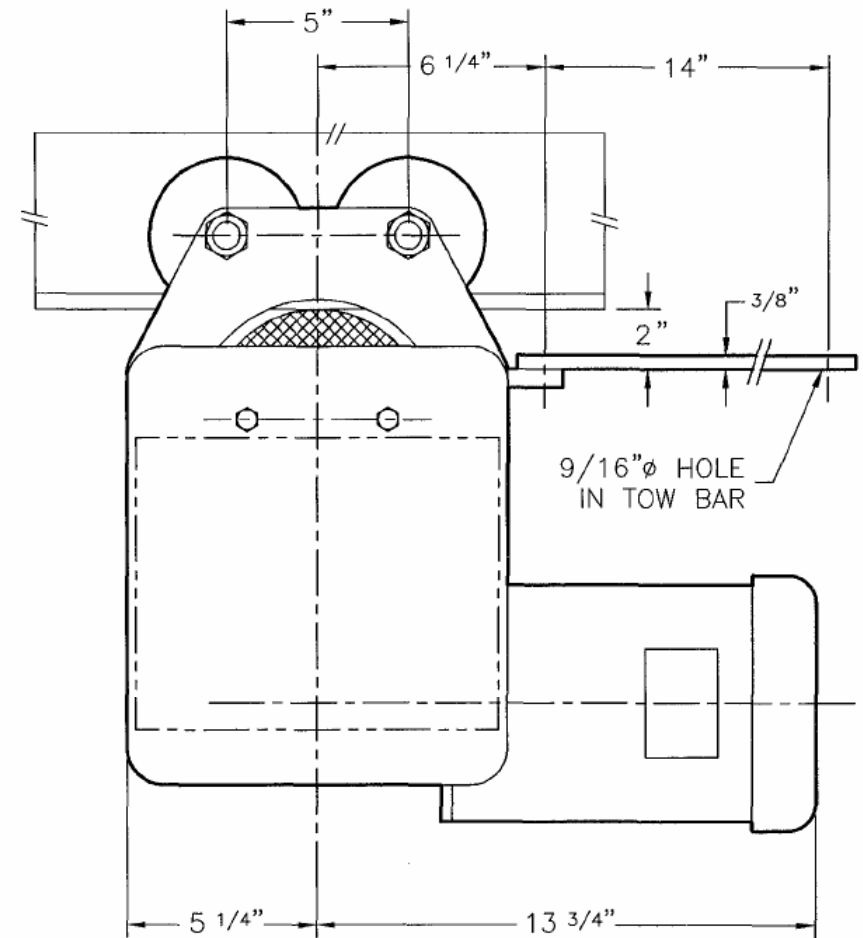
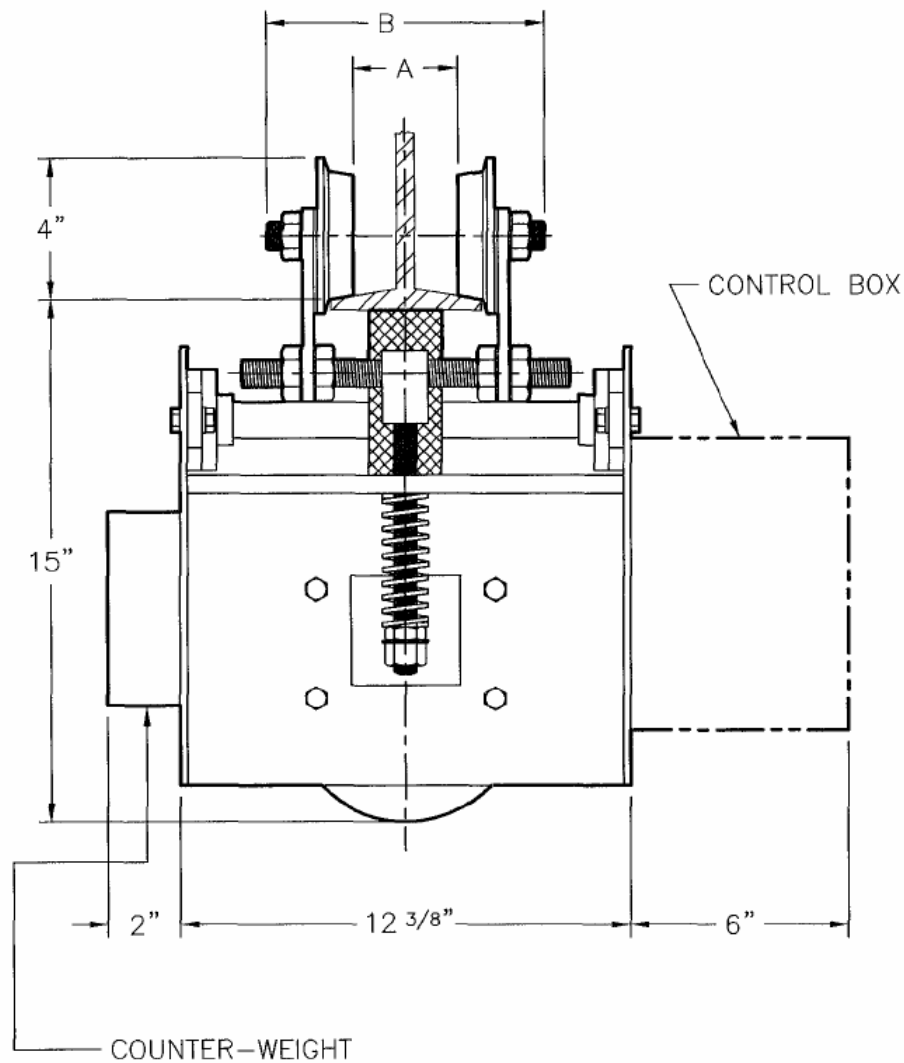
These drives are available with  $\frac{1}{2}$ ,  $\frac{3}{4}$ , 1 and 1-1/2 horsepower motors. Nominal speeds are 50, 100, 125, 150, and 200 FPM; slower speeds can be furnished. They are available with squirrel cage motors and single speed solid state or variable frequency control and 2 speed motors and control.

The drawing provides maximum clearance dimensions.

Consult factory for control panel dimensions.

US-V5 Monotracors are available for 2", 3 $\frac{1}{4}$ ", 4", and 5" Monorail lines.





ALL DIMENSIONS ARE  
FOR REFERENCE ONLY  
AND SUBJECT TO CHANGE  
WITHOUT NOTICE

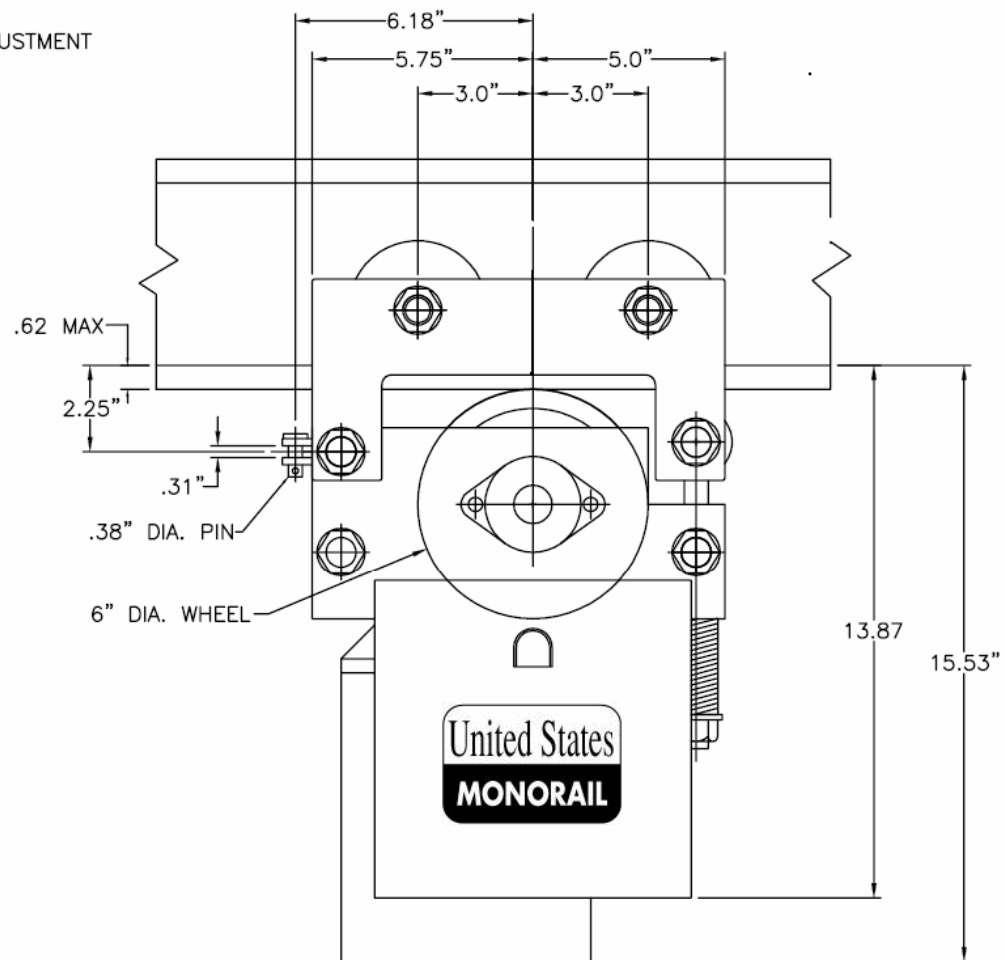
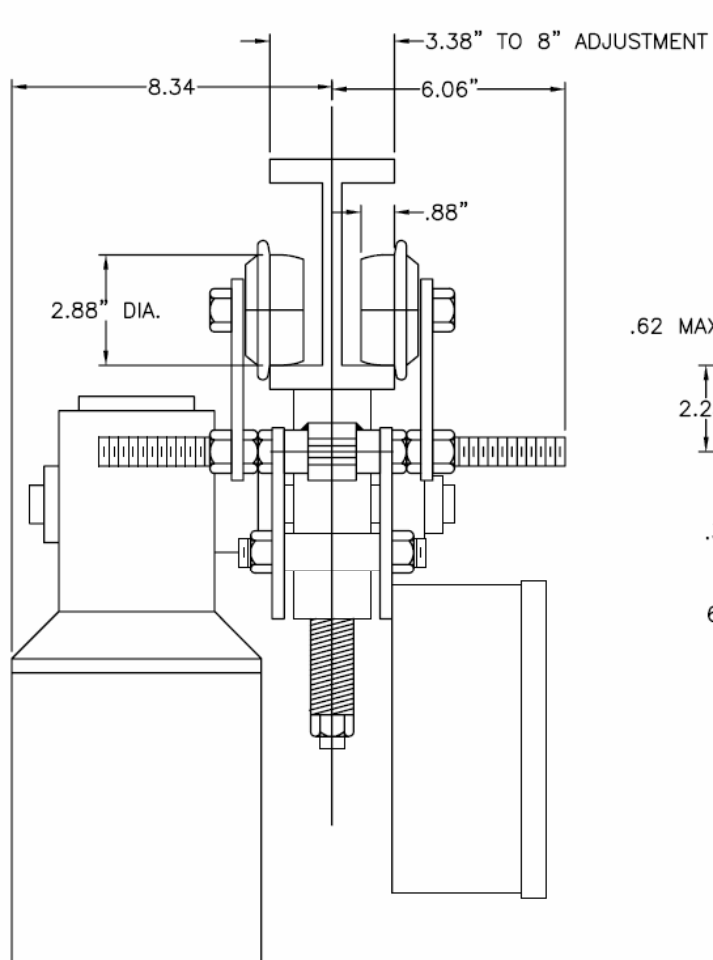
NOTES:

1. WILL NEGOTIATE CURVES AS SMALL AS 4FT RADIUS (WITH GUIDE ROLLERS)
2. A = FLANGE (MINUS) 1-3/8", B = FLANGE (PLUS) 3-1/2" (STANDARD WHEELS)

**United States Monorail**  
**Boston, MA**

Model V6 DRIVE TRACTOR

DRAWING NO.:



|     |           |         |
|-----|-----------|---------|
|     |           |         |
|     |           |         |
|     |           |         |
|     |           |         |
| MK. | REVISIONS | CK-DATE |

# Model V7 TRACTOR

United States Monorail

Boston, MA

|               |     |              |     |
|---------------|-----|--------------|-----|
| DR.           | TR. | CK.          | AP. |
| SCALE NONE    |     | DATE 9/17/12 |     |
| REF. DWG. NO. |     |              |     |
|               |     |              |     |