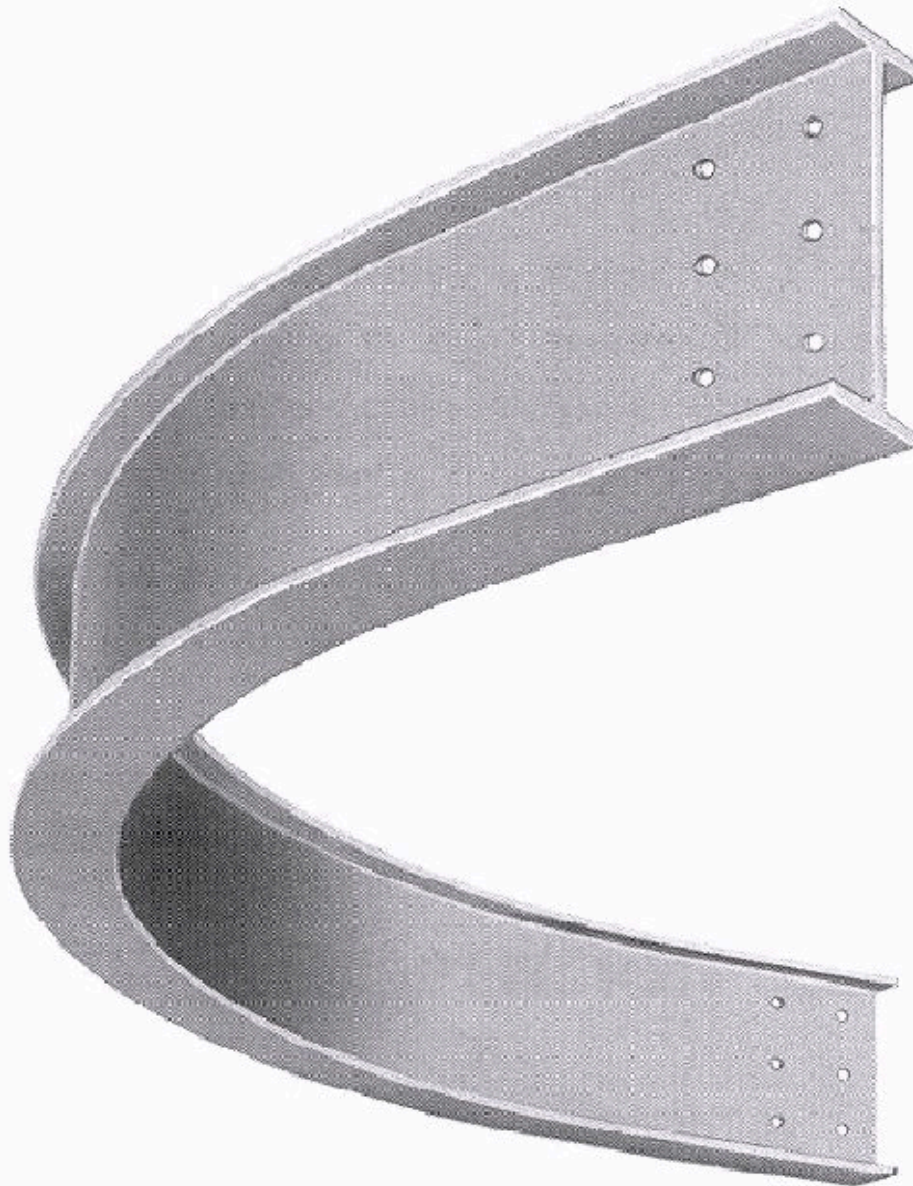


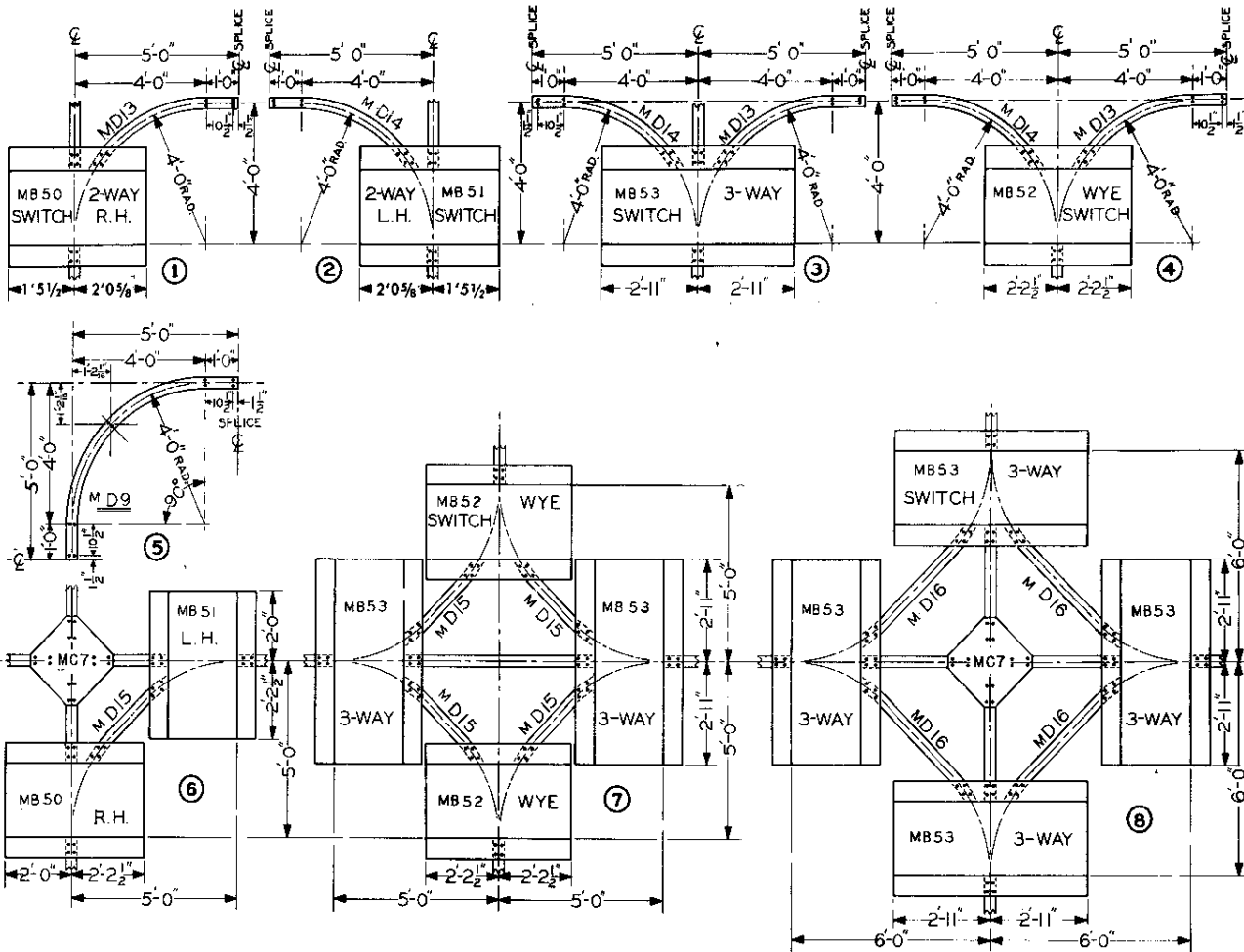
# RAILMASTER STANDARD CURVES



RailMaster Standard Curves are bent to a 4 foot radius and cut to fit switch or track layout requirements.

RailMaster Curves are bent to a true radius with smooth, flat flanges free from kinks or roughness. Curves can be furnished to meet special requirements being specially bent at a nominal bending charge. Finish: Focal Green.

# Curves for RailMaster Glide Switches



**DIMENSIONS FOR STANDARD CURVE AND GLIDE SWITCH GROUPS**

The above drawings illustrate the usual groupings of RailMaster Glide Switches and give complete dimensions of curves. Minimum spacing details will be found on page 61. Hole drilling details for curves are shown to the right. Symbols in the upper corner of this drawing give the varying dimensions as applied to the different groups.

See Catalog E-2 for list and general description covering curves used above. Where electrification is used, add the letter "H" into the numbers shown in the above drawing.

